

# Angular Contact Ball Bearings

Bearing No. : **NACHI 7200**

■ Bearing Type

■ Clearance

■ Tolerance Class

**Dimensions**

**Dimensions**

d = 10<sup>0</sup>  
-0.008

D = 30<sup>0</sup>  
-0.009

B = 9<sup>0</sup>  
-0.120

r = 0.6~1  
(Radial Direction)

r = 0.6~2  
(Axial Direction)

r1 = 0.3~0.6  
(Radial Direction)

r1 = 0.3~1  
(Axial Direction)

a = 1.3

da1(min) = 15

da2(min) = 12

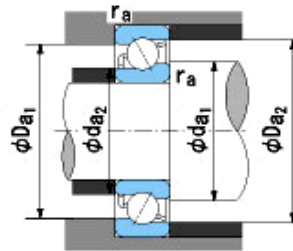
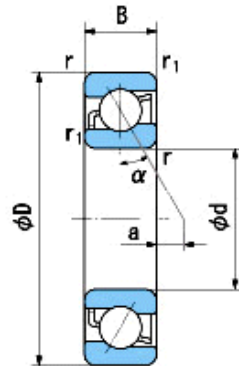
Da1(max) = 25

Da2(max) = 27.4

ra(max) = 0.6

ra1(max) = 0.3

Mass = 0.034 kg



Basic Dynamic Load Rating Cr :	<b>5,400</b> N
Basic Static Load Rating Cor :	<b>2,710</b> N
Limiting Speed ;	
Grease Lubrication :	<b>22,000</b> min <sup>-1</sup>
Oil Lubrication :	<b>30,000</b> min <sup>-1</sup>

	INNER RING	OUTER RING
O.D.Surface Runout with Side :		-
Axial Runout with Bore :	-	
Axial Runout with Raceway :	-	
Width Variation :	<b>0.015</b>	<b>0.015</b>
Radial Runout :	<b>0.010</b>	<b>0.015</b>